



2018-19 SOL Performance by Subgroup

Region 2 Division Comparison

*Does not include Pre-K • TS = Too small

There are four neighboring school divisions in Region 2 with which we compare student achievement – Hampton, Newport News, Poquoson and York. Within these four school divisions, all data points (including total number of schools, student enrollment, percentage of students with disabilities, percentage of students who are economically disadvantaged, percentage of students with limited English; and operating budget) are not comparable. As a result, the basis for our Region 2 comparison is strictly geographic.

Key

Hampton	Newport News	Poquoson
York	WJCC	State

Like School Division Demographics

Number of Schools

16	28	38	4	19
----	----	----	---	----

Fall Membership*

11,813	19,594	28,654	2,139	12,982
--------	--------	--------	-------	--------

Economically Disadvantaged (EcD)

35.7%	48.3%	44.7%	17.7%	22.5%
-------	-------	-------	-------	-------

Students with Disabilities (SWD)

15.4%	13.5%	12.2%	11.3%	11.5%
-------	-------	-------	-------	-------

English Learners (EL)

6.4%	2.6%	6.8%	0.6%	4.5%
------	------	------	------	------

Operating Budget

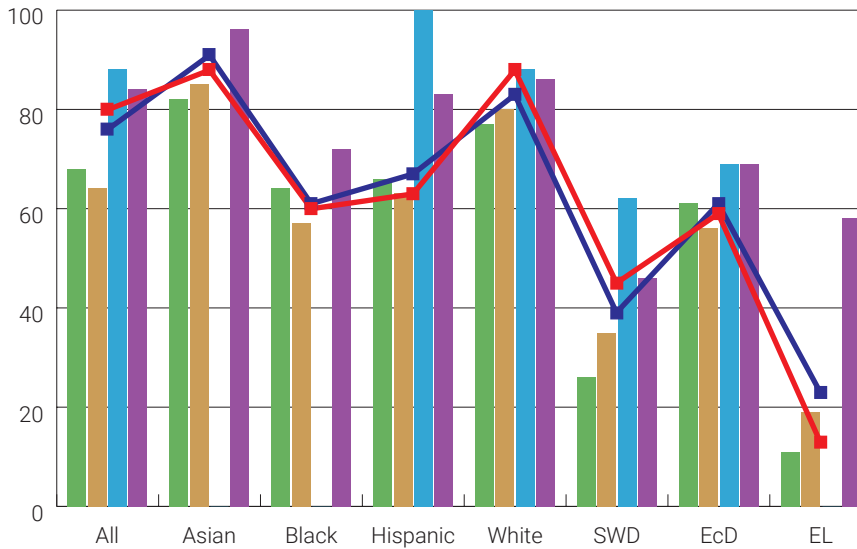
\$137,808,944	\$211,141,195	\$315,556,114
\$23,784,161	\$145,544,545	

Reading



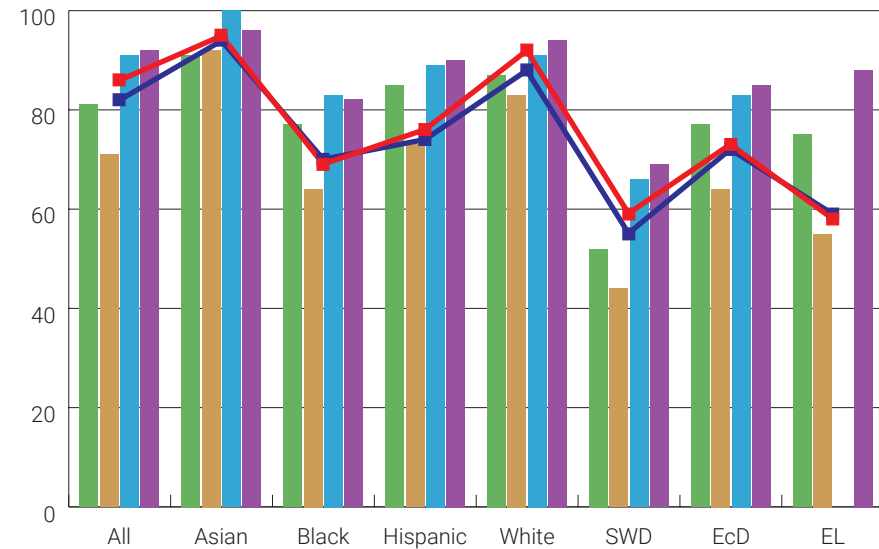
74%	88%	69%	79%	83%	39%	68%	48%
64%	84%	57%	63%	80%	36%	55%	28%
91%	100%	70%	97%	91%	69%	80%	TS
88%	90%	78%	85%	90%	61%	77%	58%
81%	91%	63%	68%	89%	46%	65%	32%
78%	89%	65%	66%	85%	47%	65%	35%

Writing



68%	82%	64%	66%	77%	26%	61%	11%
64%	85%	57%	63%	80%	35%	56%	19%
88%	TS	TS	100%	88%	62%	69%	TS
84%	96%	72%	83%	86%	46%	69%	58%
80%	88%	60%	63%	88%	45%	59%	13%
76%	91%	61%	67%	83%	39%	61%	23%

Math



81%	91%	77%	85%	87%	52%	77%	75%
71%	92%	64%	73%	83%	44%	64%	55%
91%	100%	83%	89%	91%	66%	83%	TS
92%	96%	82%	90%	94%	69%	85%	88%
86%	95%	69%	76%	92%	59%	73%	58%
82%	94%	70%	74%	88%	55%	72%	59%



2018-19 SOL Performance by Subgroup

Region 2 Division Comparison

*Does not include Pre-K • TS = Too small

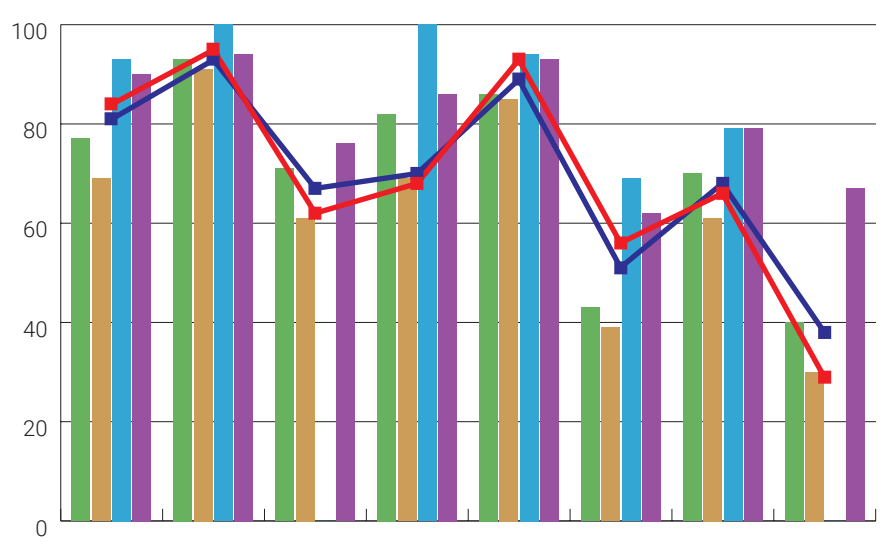
Key		
Hampton	Newport News	Poquoson
York	WJCC	State

History



Hampton	75%	89%	71%	82%	84%	42%	69%	45%
Newport News	67%	89%	60%	66%	83%	37%	58%	40%
Poquoson	93%	85%	TS	96%	92%	74%	82%	TS
York	88%	92%	72%	85%	91%	57%	74%	73%
WJCC	84%	94%	65%	71%	91%	55%	67%	44%
State	80%	93%	66%	72%	87%	52%	68%	47%

Science



Hampton	77%	93%	71%	82%	86%	43%	70%	40%
Newport News	69%	91%	61%	69%	85%	39%	61%	30%
Poquoson	93%	100%	TS	100%	94%	69%	79%	TS
York	90%	94%	76%	86%	93%	62%	79%	67%
WJCC	84%	95%	62%	68%	93%	56%	66%	29%
State	81%	93%	67%	70%	89%	51%	68%	38%